

# DRAFT BUDGET

## INVESTMENT COSTS

Harvester = 0.150 mio \$  
Sugar Extractor = 0.15 mio \$  
Pelletisation = 0.85 mio \$  
Cogeneration = 0.12 mio \$  
BioSyngas = 0.21 mio \$  
Activated Coal = 3.80 mio \$  
Ethanol Distilleries = 5.2 mio \$

**TOTAL = 10.48 Mio \$**



## ANNUAL EXPENSES ESTIMATION

Plantation = 0.48 mio \$/y  
(600 \$/ha)  
Financial (i = 5%) = 1.0 mio \$/y  
O&M (4% I) = 0.42 mio \$/y

**TOTAL = 1.9 mio \$/y**

## INCOME

(estimated on average conditions)

Animal feed pellets = 0.416 mio \$ /y  
Electricity = 0.040 mio \$/y  
Bio-Syngas = 0.030 mio \$/y  
Activated Coal = 2.180 mio \$/y  
Bioethanol = 0.560 mio \$ /y

**TOTAL = 3.226 Mio \$/y**

It is now possible to supply modern bioenergy complexes for rural villages based on Sweet Sorghum plantations, this crop being able beyond the satisfaction of the essential needs of the population (food, animal feed, energy), to produce an extra-income from the surpluses sale for an economic sustainable activity.

These Integrated Complexes could provide a vital contribution for a general rural socio-economic development and for considerably increasing the Human Index of Development of the village inhabitants.

Not many commercial sound technologies are today available for these types of small bioenergy complexes. Economics are still penalised by the relatively high cost of manufacture in small series. Transfer of good modern technologies is vital for accelerating their penetration in rural districts.

The comprehensive utilisation and processing of the biomass resource in integrated complexes with the simultaneous production of several high value commodities is essential for the improvement of the economics and large scale deployment of this type of activity

Significant effort for management, technical assistance and for education & training must be envisaged as vital accompanying measure to ensure a viable and durable operation of the complex.

## PUBLISHED BY



E T A

Piazza Savonarola, 10 - 50132 Florence - Italy  
Tel. +39 055 5002174 - Fax +39 055 573425  
eta.fi@etaflorence.it - www.etaflorence.it



Sylvesteinstr. 2 - 81369 Munich - Germany  
Tel. +49 89 720 127 35 - Fax +49 89 720 127 91  
wip@wip-munich.de - www.wip-munich.de

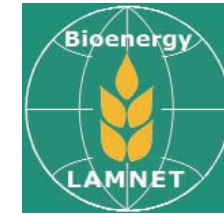


Rond Point Schuman, 6 - B 1040 Brussels - Belgium  
Tel. +32 2 28 28 420 - Fax +32 2 2828 424  
eubia@eubia.org - www.eubia.org

Neither the publisher, nor the European Commission or any person acting on behalf of the Commission is responsible for the use which might be made of the information contained in this publication. Reproduction is authorised provided the source is acknowledged.

# LATIN AMERICA THEMATIC NETWORK ON BIOENERGY

## LAMNET



# Modern Bioenergy Village Complex

Integrated production of food,  
animal feed, energy



This publication has been realised in the framework of LAMNET, thematic network funded by the European Commission, DG Research, Programme "Confirming the international role of Community Research" (Project no. ICA4-CT-2001-10106)

## SUSTAINABLE BIOENERGY VILLAGE COMPLEX

to satisfy the vital needs of a remote village of 5,000 inhabitants

This bioenergy complex is based on plantation of a dedicated herbaceous but very versatile sugar-starch-lignocellulosic crop (a specific variety of sweet-sorghum) on a piece of land of about 400 ha (farmed twice a year). The complex will be capable of producing (through several commercial sound processing units) a wide variety of commodities, such as:

Food: grains  
liquid sugar

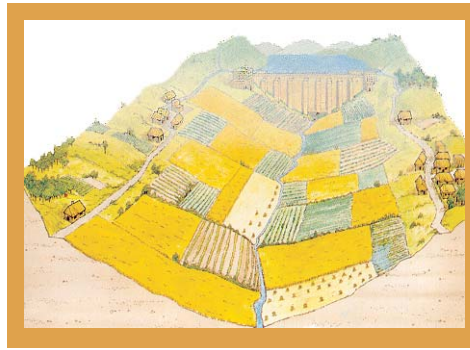
Animal feed (for meat / milk production):  
Pellets (grains + 30% bagasse)  
leaves

The small amount of bagasse with its sugar content stimulates the cows milk production.

Modern bioenergy: electricity  
bioethanol  
charcoal  
CO<sub>2</sub> - solid dry ice (if required)  
MHV gas (Charcoal gasification) if required  
Solid bagasse pellets

This bioenergy complex will also provide numerous diversified jobs to the village inhabitants.

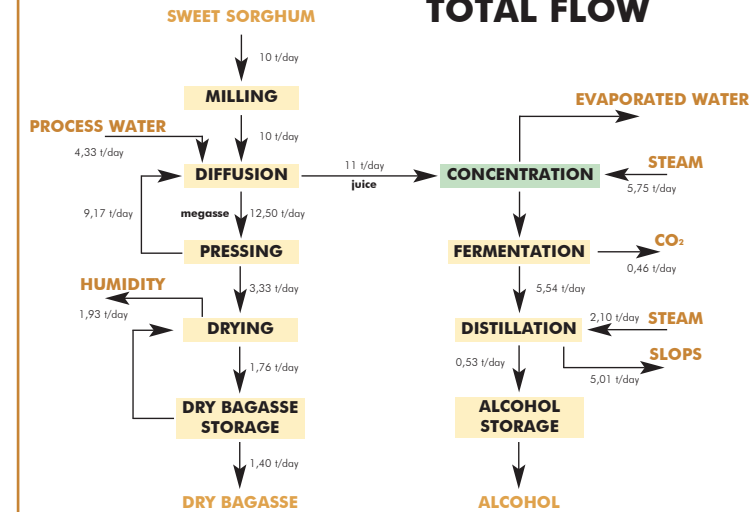
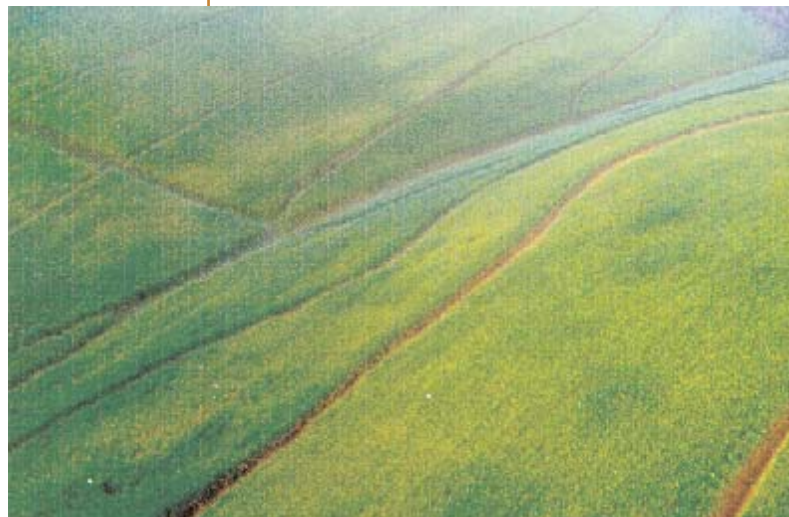
The outputs of the various products (i.e. grains, liquid sugar, electricity, heat, bioethanol, charcoal, MHV gas, CO<sub>2</sub> - dry ice, pellets) will exceed the needs of the local village, thus, sales of these commodities will serve as a significant income-surplus base for repaying the initial investment and the running costs. However, it will take two year for the complex to reach a normal operation regime.



A revolving fund could be sufficient for large-scale deployment of this type of project in districts where socio-economic development is urgently needed.

This type of bioenergy complex can be implemented in villages with a population of 100 - 5000 or even more.

Other configurations of bioenergy complexes can be designed and optimised on the basis of different types of biomass feedstock (agro-forestry residues, agro-industrial wastes, dedicated crops, etc.) but these complexes generally will not be able to supply such a wide range of products as a sweet-sorghum-based complex. Sweet-sorghum has multiple components such as starch, sugar and lignocellulosics, while other types of biomass feedstock don't have such an aspect.



Data kindly provided by Ing. Aldo Nardi

The integrated bioenergy complex, based on the exploitation of sweet sorghum for the production of bio-ethanol and other energy/industrial commodities, after its high economic viability has been demonstrated, offers a new sustainable path for production of bio-ethanol, which is considered a strategic fuel for the transport sector. Such a project may be implemented in China and other regions on a large scale, as past studies have shown the high yields of this crop in terms of grains, sugar and bagasse in several different climatic belts (i.e. Inner Mongolia, China).

This "integrated" project, once implemented on a large-scale, or in a repetitive way, can have important impacts on the economics of such complexes in terms of reducing the production costs of ethanol. Utilisation of particular varieties of Sweet Sorghum as dedicated energy crops is, in this respect, of great importance because the process "integration" comes from the opportunity of converting the several components of the plant: starch, sugar and lignocellulosic. This very important feature distinguishes Sweet Sorghum from other grain crops (corn, wheat, barley) currently utilised for bio-ethanol production in other climatic areas.

In fact, well-known bioethanol crops (i.e. sugar beet- corn-sugar cane) are cultivated only to produce alcohol. Sweet sorghum plants, on the contrary, can provide not only sugar and grains which can be used for bioethanol production, but also large amounts of bagasse, which can be used as fuel to generate steam, electricity necessary for the bio-ethanol production process, syngas, hydrogen, etc., thus providing an energetic surplus for sale.

